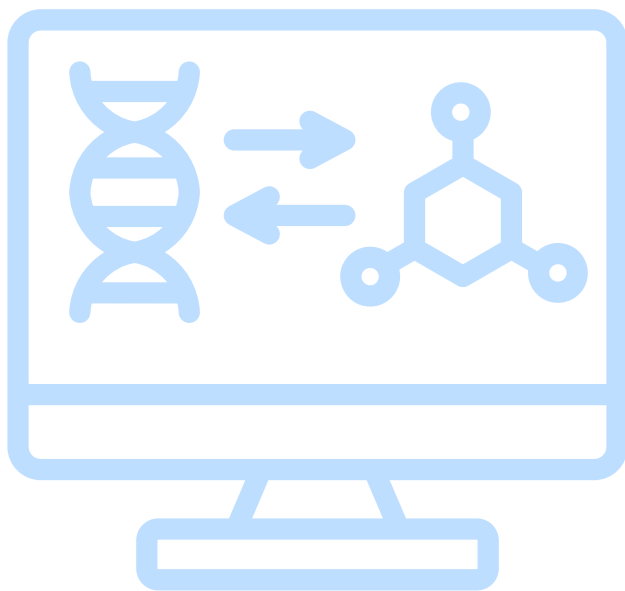


ME Spring Seminar 08

Digital Manufacturing Technology Applications in Biomedical Research



Cheol Woo Ha, Ph.D.

Korea Institute of Industrial Technology(KITECH)

Recent studies across various industries have actively explored the integration of multiple manufacturing processes into digital platforms to improve productivity, yield, and mass production capability. Manufacturing is now shifting toward a data-driven approach that systematically acquires and analyzes process data and integrates it with artificial intelligence (AI). In the bio and medical fields, digital manufacturing technologies are also being increasingly applied to bridge laboratory-scale technologies with commercialization.

This presentation introduces digital manufacturing technologies that apply AI to 3D printing processes, based on research achievements at the Korea Institute of Industrial Technology (KITECH). It also presents various bio-related applications of 3D printing and proposes digital manufacturing strategies for industrial expansion. Finally, this presentation discusses research related to yield improvement through process optimization, AI-based quality control using manufacturing process data, and reduction of production time.

Bldg.110 #N101

16:00 - 17:15

Wednesday, **May 11**



Host:
Prof. Yoonsoo Rho (yrho@unist.ac.kr)